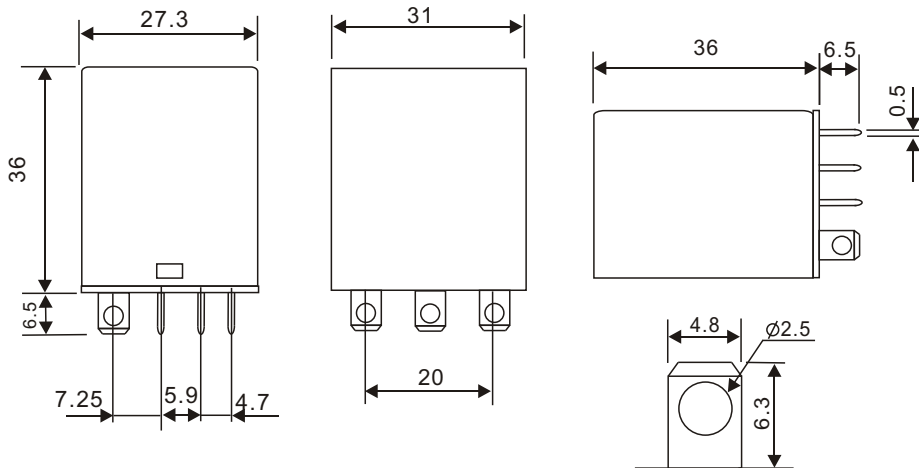


CONTACT RATING

LY3 TYPE	Resistive (Cos. = 1)	AC 250V/28V	10A
LY4 TYPE	Resistive (Cos. = 1)	AC 250V/28V	10A

DIMENSIONS(mm)

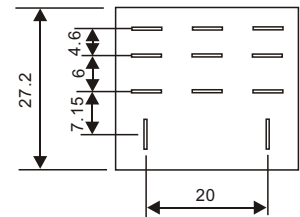


WIRING DIAGRAM
(BOTTOM VIEW)

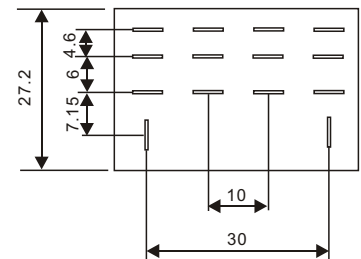
SOLDER LUG/PLUG-INI

P.C.B LAYOUT
(BOTTOM VIEW)

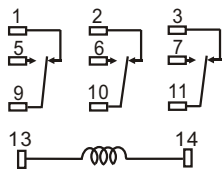
LY3



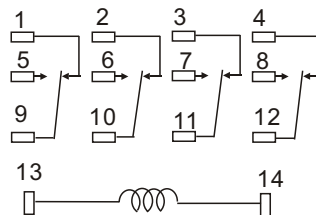
LY4



LY3



LY4



GENERAL DATA

Insulation Resistance	100 M Min. (DC 500V)
Dielectric Strength	1,000 VAC, 50/60Hz between contact.
	1,500 VAC, 50/60Hz between all elements.
Contact Material	Silver- Cadmium Oxide as standard.
Contact Resistance	100 milliohms max. (initial value)
Shock Resistance	Malfunction: 10G(11ms) ; Destructive: 100G(6ms)
Vibration Resistance	Malfunction: 10 to 55 Hz. at Double Amplitude of 1.5 mm
	Destructive: 10 to 55 Hz. at Double Amplitude of 1.5 mm
Operation Time	25 ms max.
Release Time	25 ms max.
Temperature Range	- 40°C ~ + 55°C
Expected Life	With operation rate 30/min.
	Mechanical - 10,000,000 operations min.
	Electrical - 100,000 operations min. at rated load.
Weight	LY3 Type: 50 grams, LY4 Type: 70 grams